



# KLEREO VALVE

For a full  
**AUTOMATIC FILTRATION**



Water treatment - smart control - modern & connected swimming pool



## KLEROO VALVE, For a full automatic filtration

**Klereo Valve wash automatically sand filters and removes impurities to ensure the quality of water.**

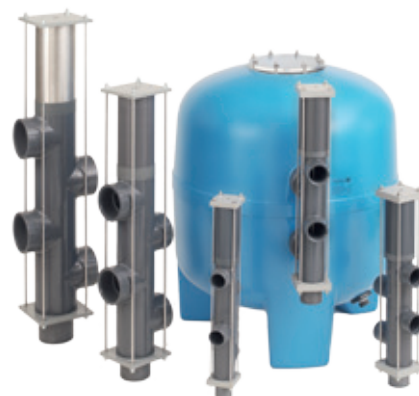
### The advantages of Klereo Valve:

- Clear and pure water,
- The comfort of an automated system,
- Simple to install and to use. Possibility to rotate the connections by 90°,
- No need to stop filtration during washings,
- Maximum safety: when the power is off, the valve automatically switches to the filtration position (Mechanical move of a spring) and the swimming pool cannot be empty because of the valve malfunction,
- Less pressure drop due to the valve: higher washing speed and more efficient backwashing.

» Available in diameter 50 or 63 mm  
(for larger diameters, please contact us).



**"A pure and crystal-clear water"**



### The kit includes:

- 1 automatic 5-way valve
- 1 compressor 3.5 to 4.5 bar
- 1 compressor connection kit